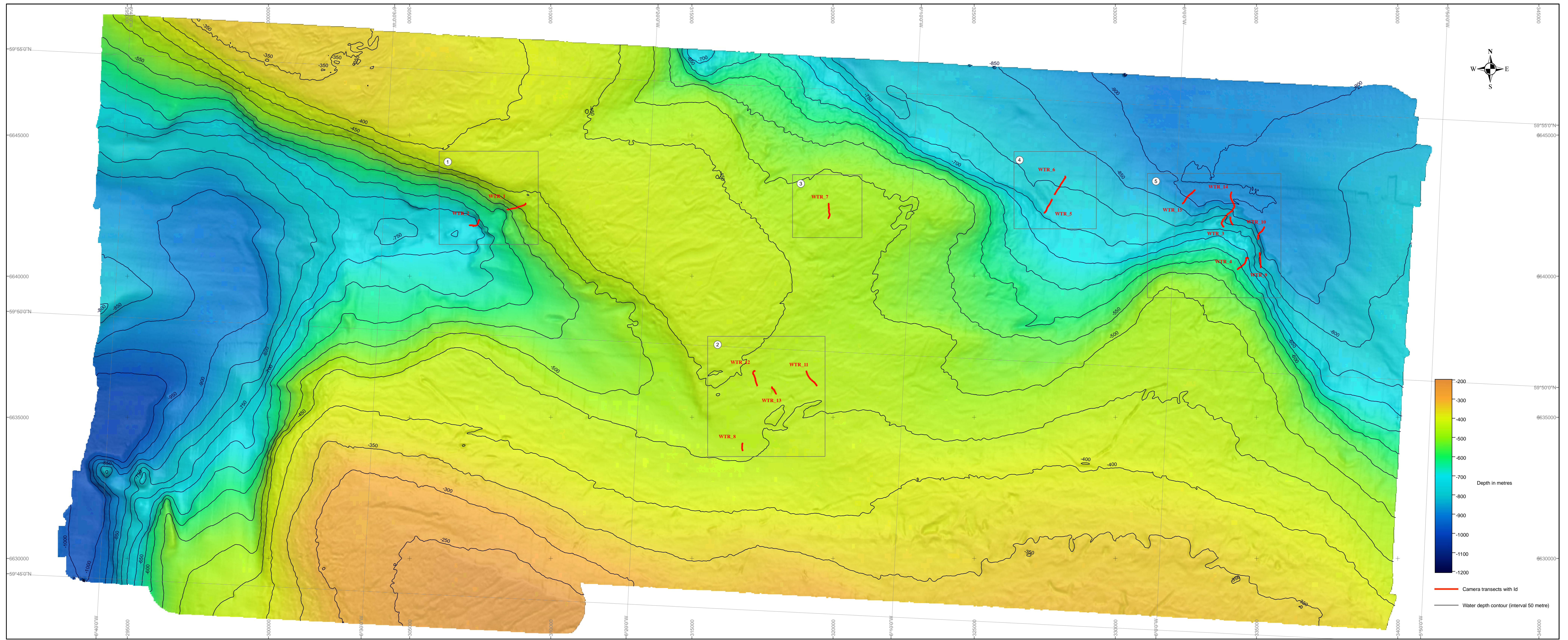
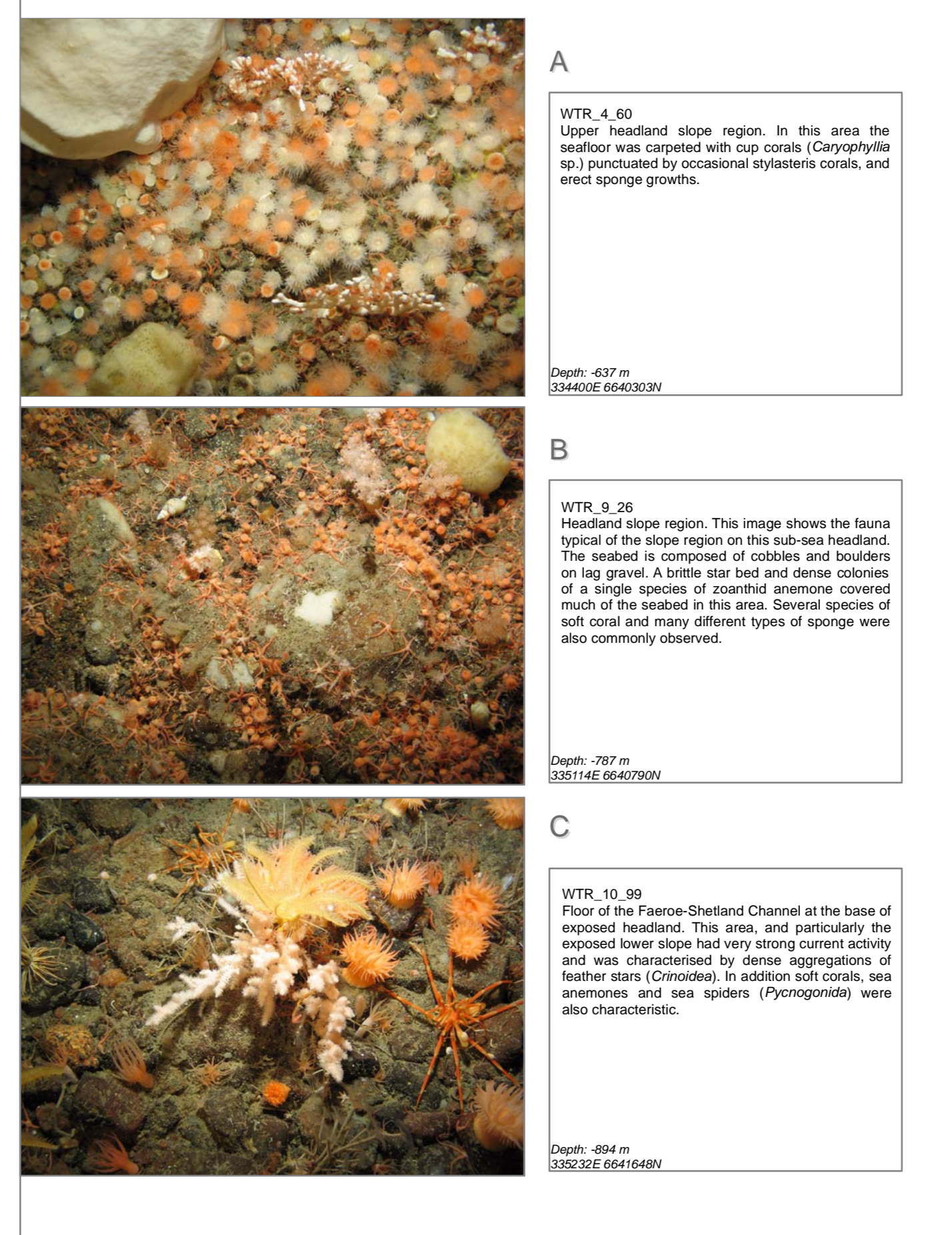
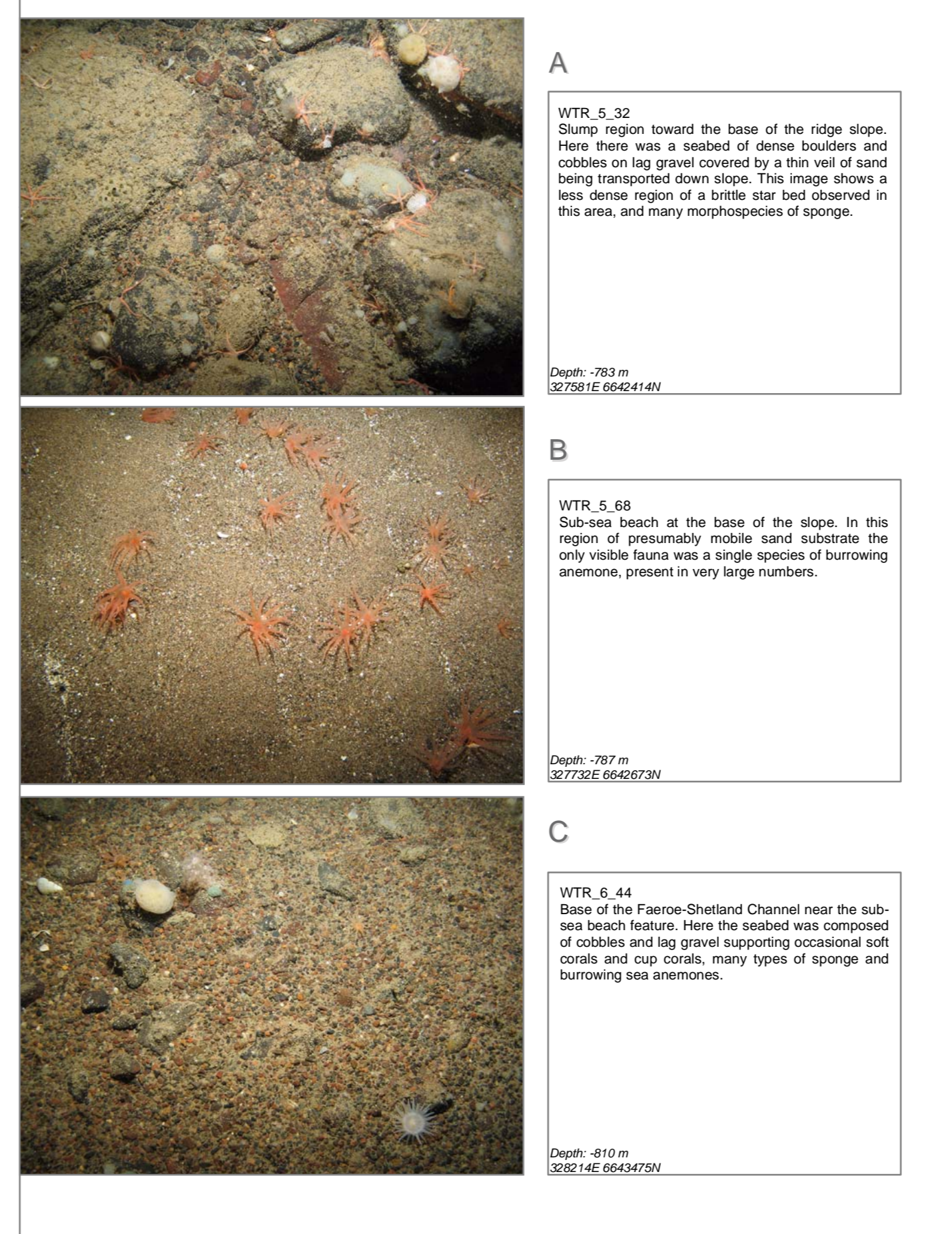
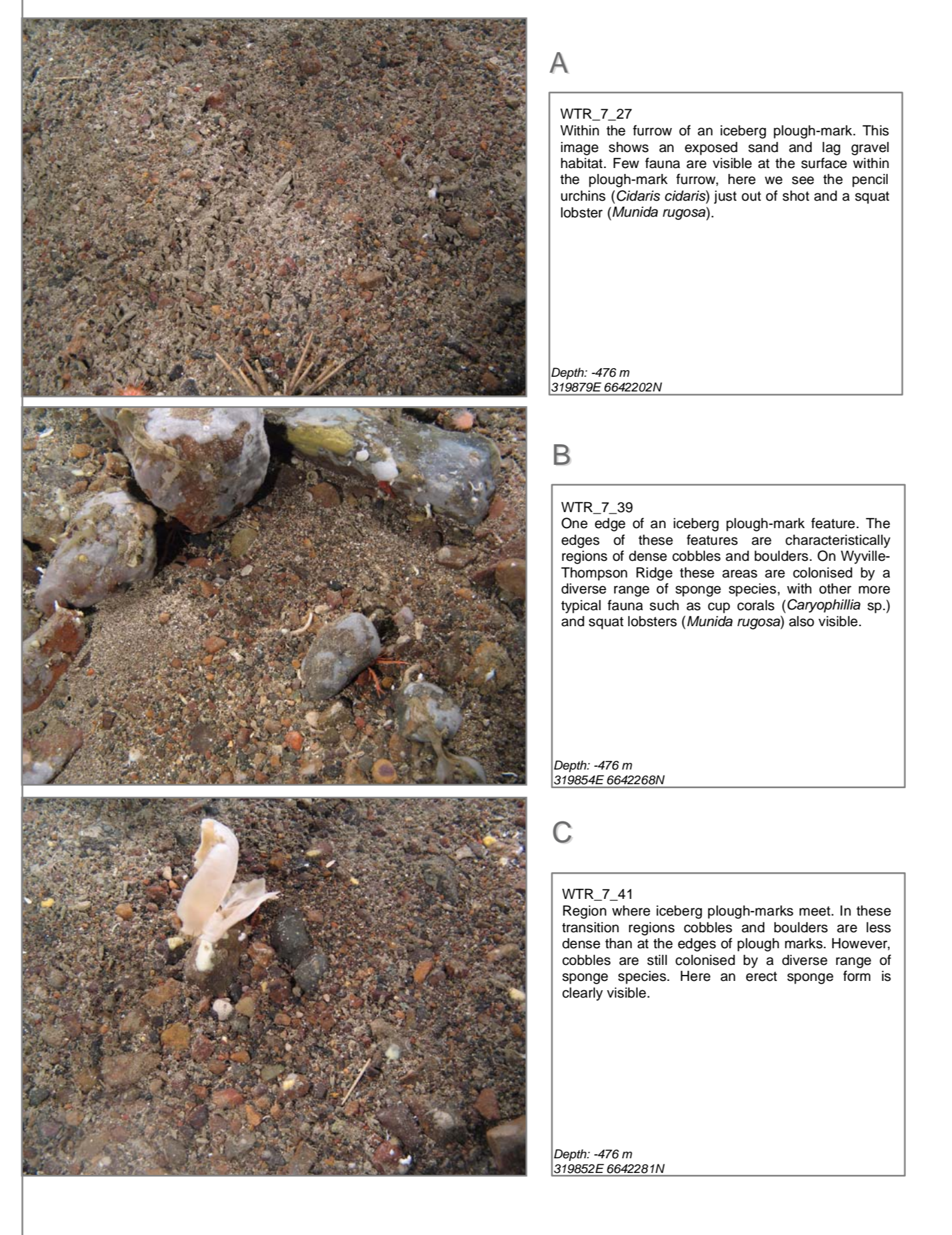
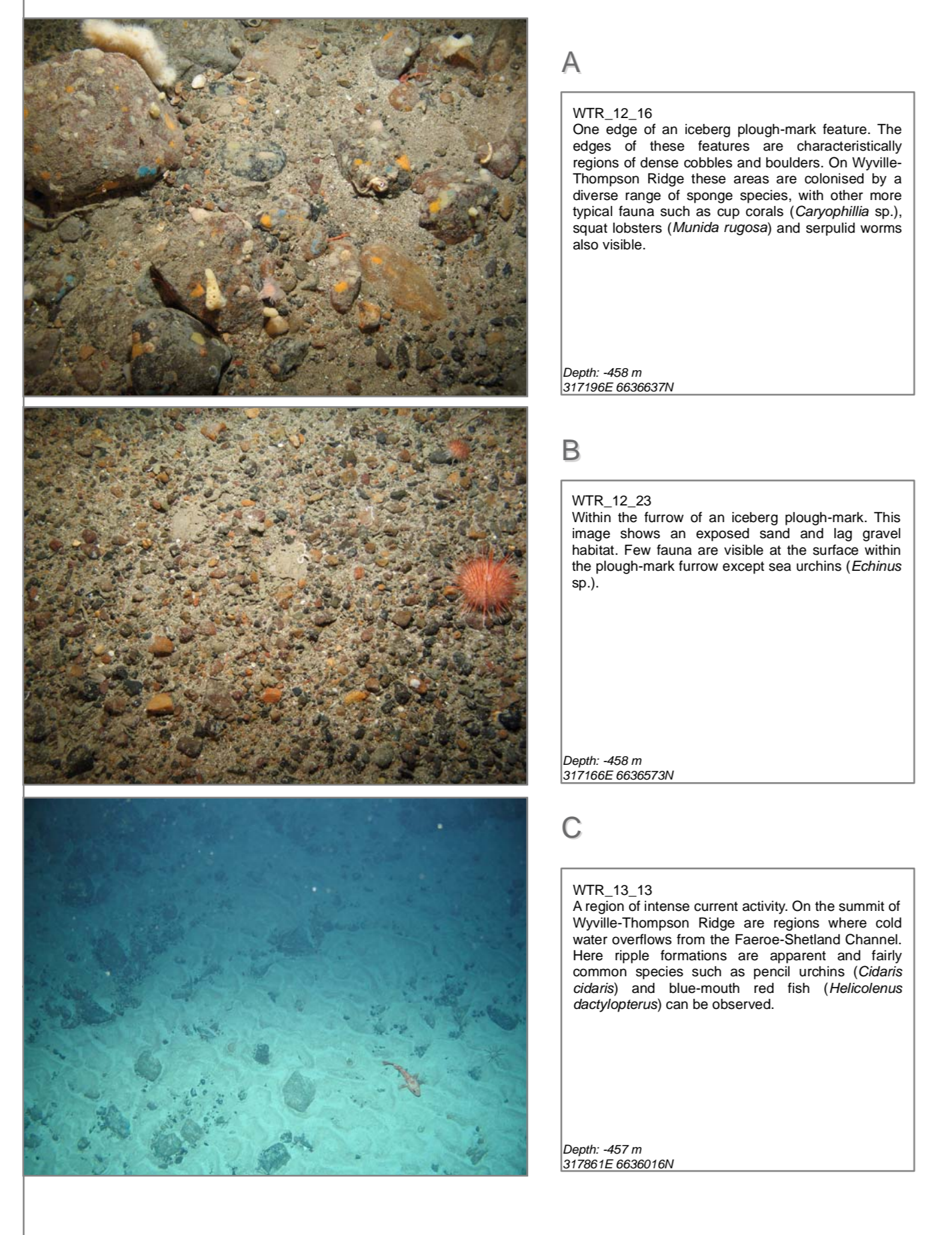
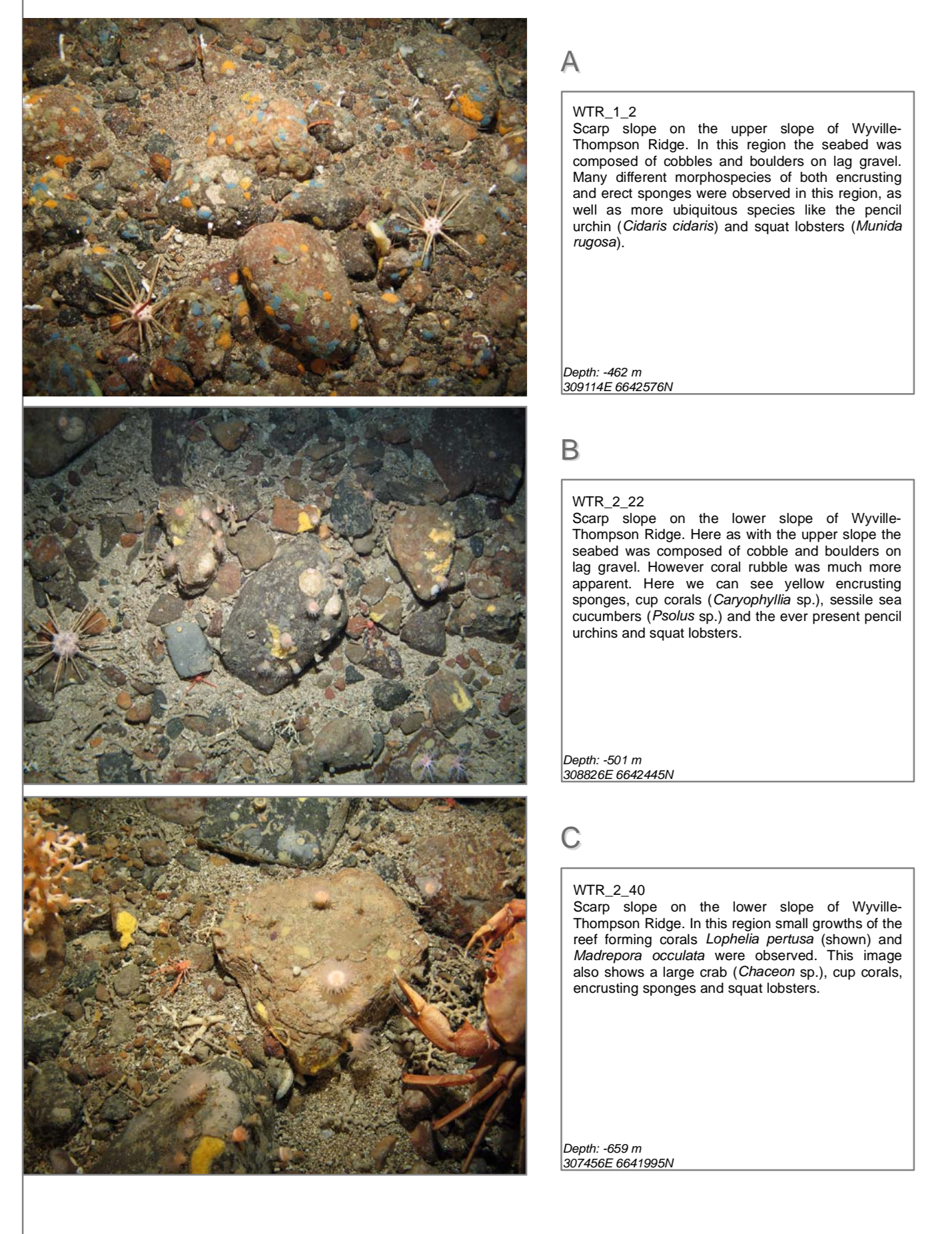
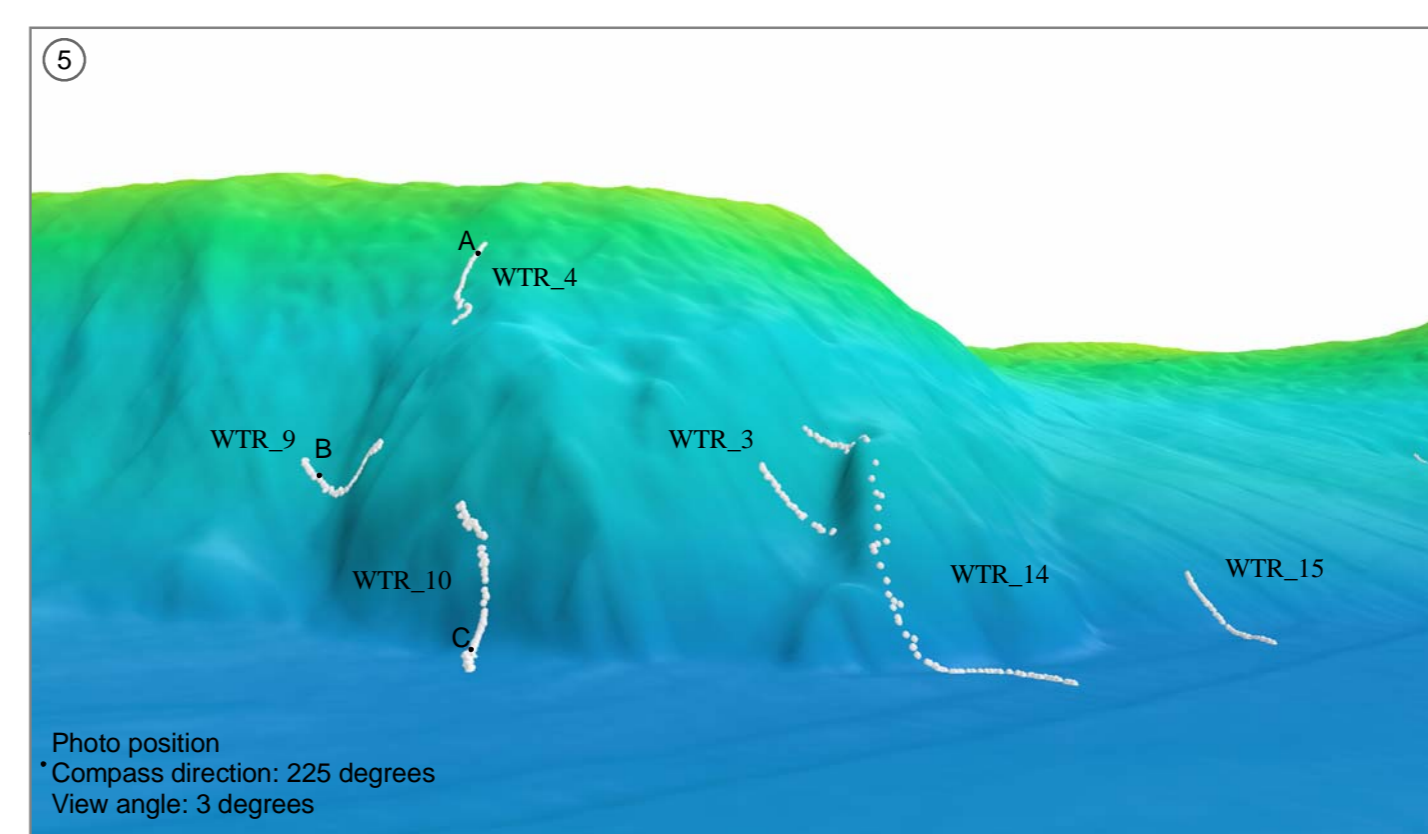
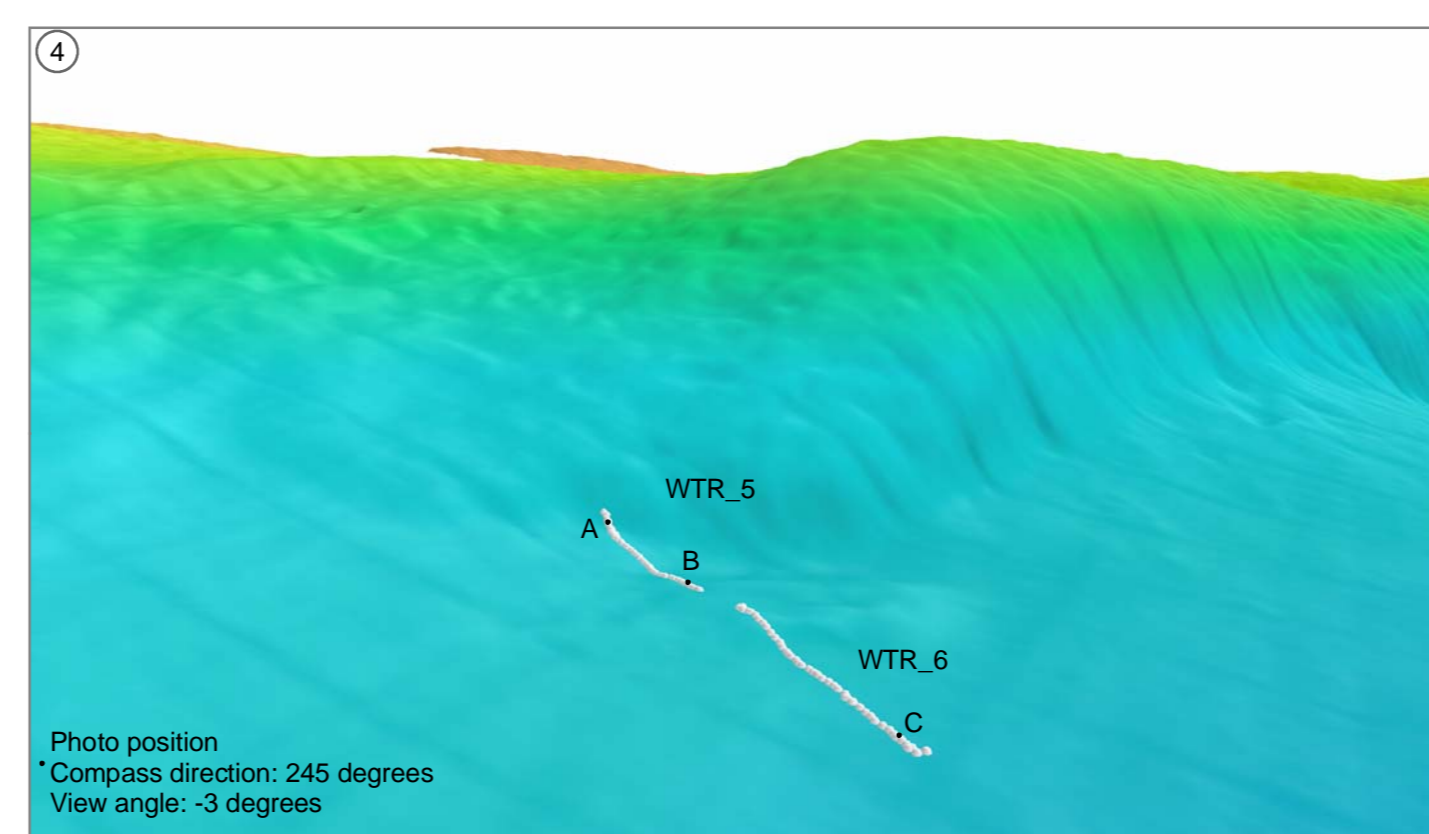
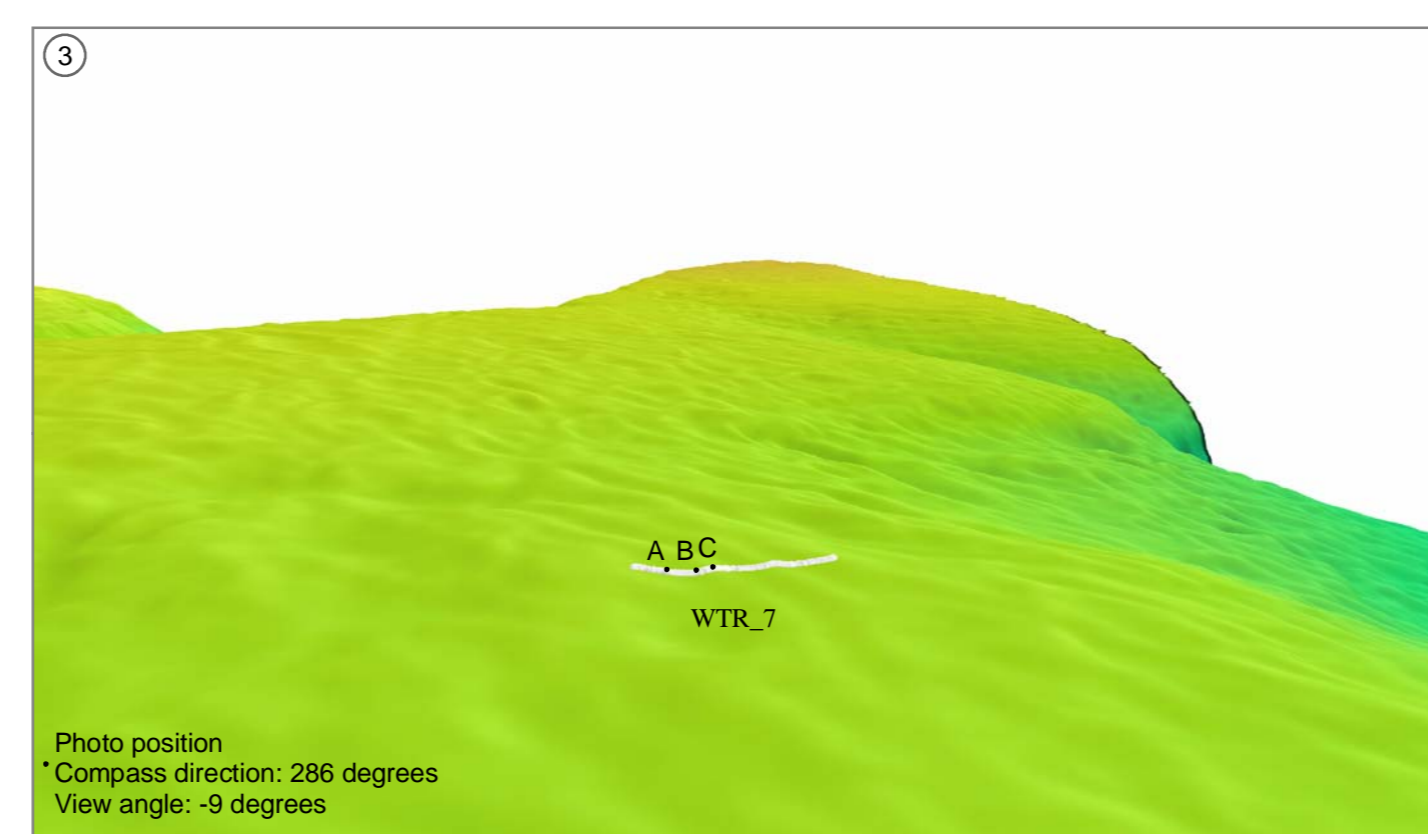
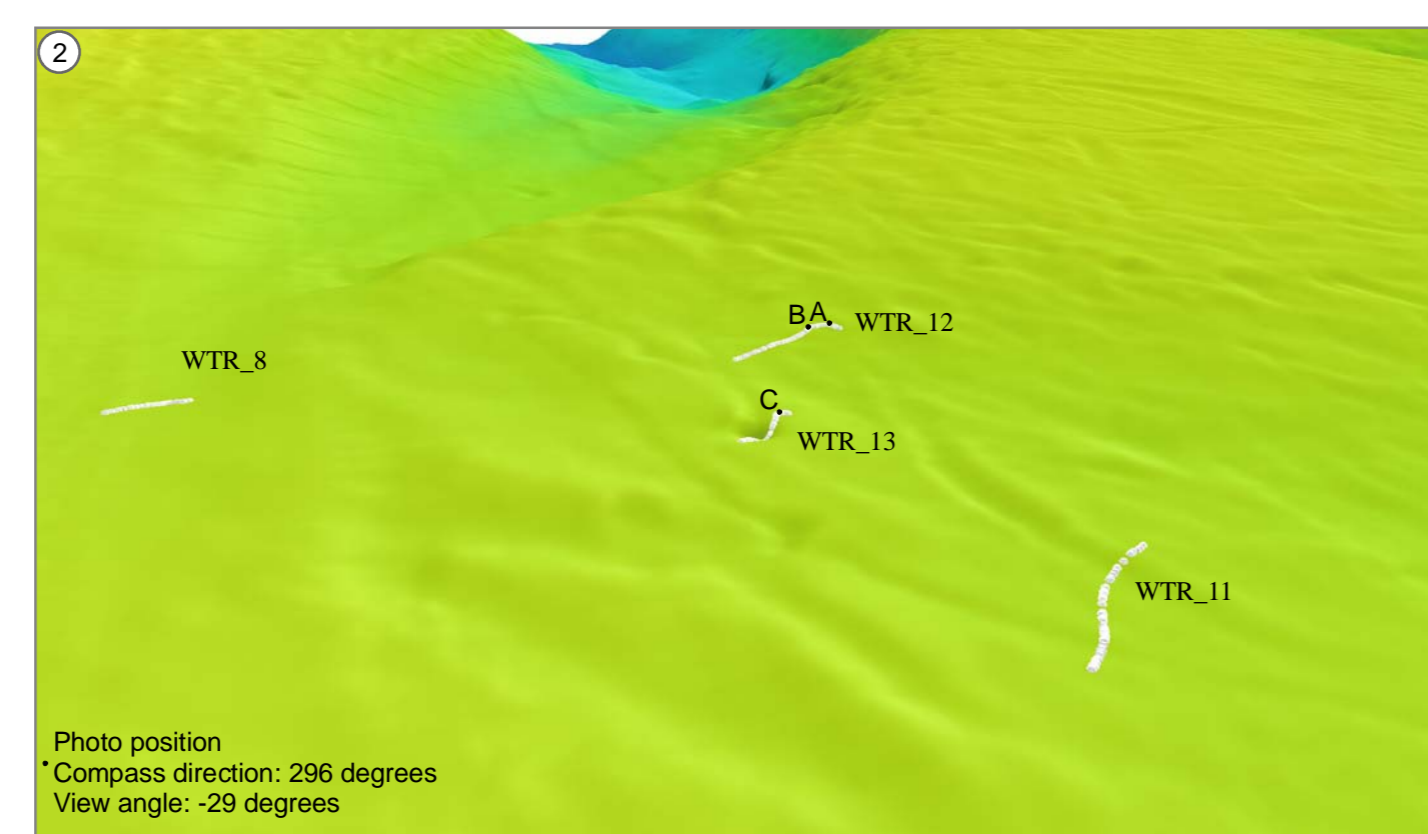
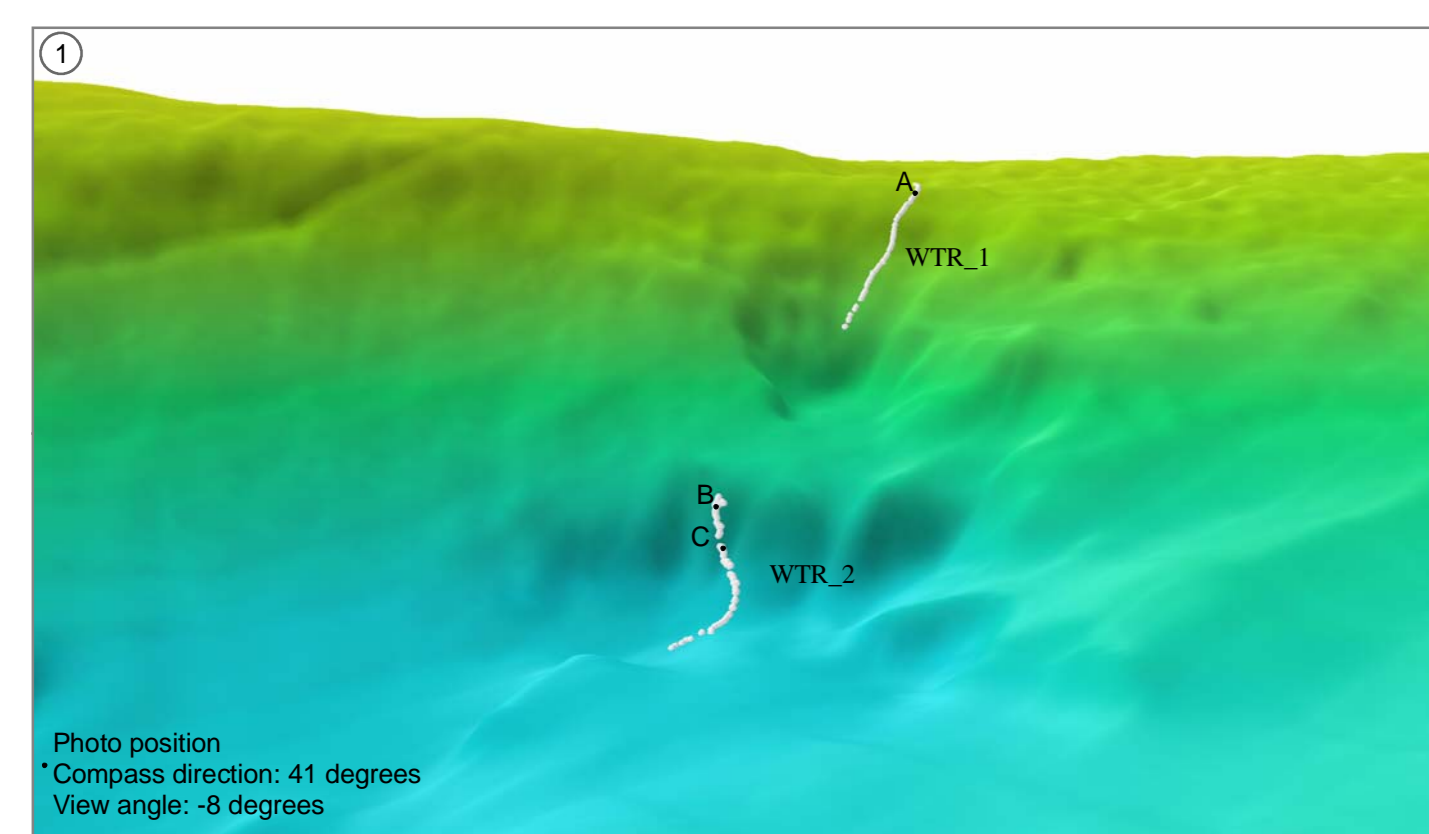


BATHYMETRY WYVILLE - THOMSON RIDGE



IMAGES



0 1 000 2 000 3 000 4 000 5 000 Meters
0 4 000 8 000 12 000 Feet

Geoidetic parameters
Projection: Universal Transverse Mercator 2 30N
Spheroid: WGS 84 Datum: WGS 84

This document was produced as part of the UK Department of Trade and Industry's offshore energy Strategic Environmental Assessment programme.
The SEA programme is funded and managed by the DTI and coordinated on the behalf of Genesis Ltd and Hesperia Anderson Ltd

Survey contractor
Marin Mätteknik AB

Office phone: +46 (0)31 695280
Fax: +46 (0)31 695290
E-mail: info@mmab.se
Nyja Vägen 1, Byggnad 94, 426 71 Västra Frölunda, Sweden

2	Final Issue	061130	OS, SY
1	Preliminary Issue	061023	SY
0	Chart presentation	061020	SY
	Rev. No.	Date	Sign.

Franklin SEA/SAC Survey
Wyville Thomson Ridge
August - October 2006

MMT project no. 60506
Scale 1:50 000

Revision no. 2
Drawing no. 60506-WTR-BATHY-001